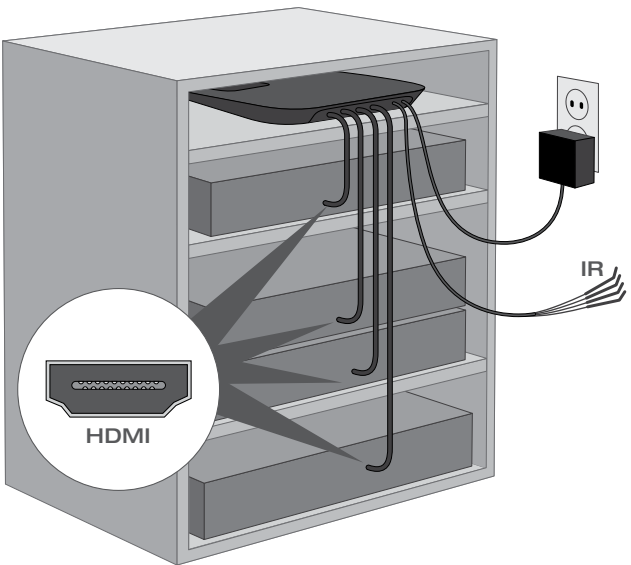
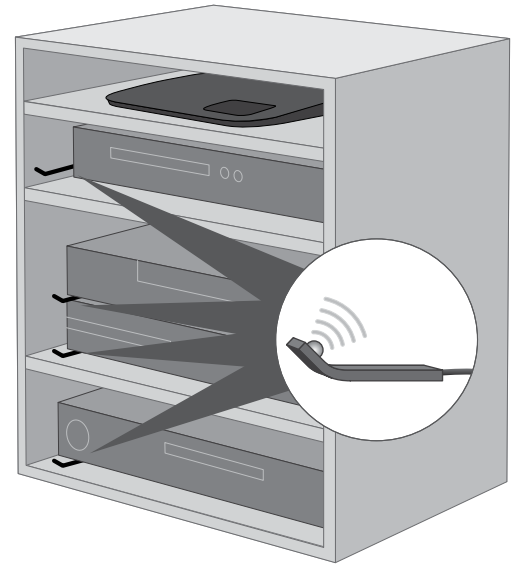


1 Connect transmitter to video source and to power. Connect IR emitter cable. Turn on video source.

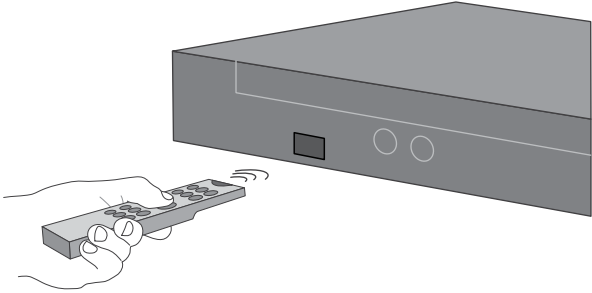


2 Route IR emitter cable end to the front of your video source.

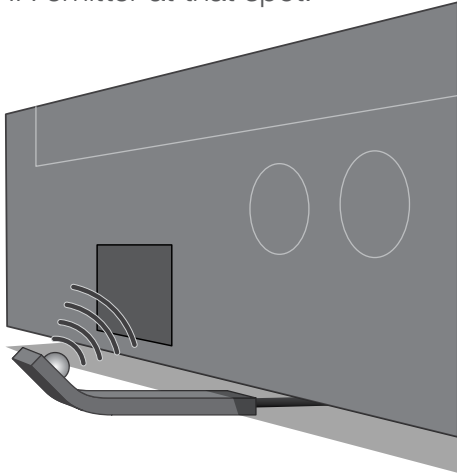


Using the included IR emitter, ScreenCast can relay signals from your remote control to your video source. You will aim this in step 3.

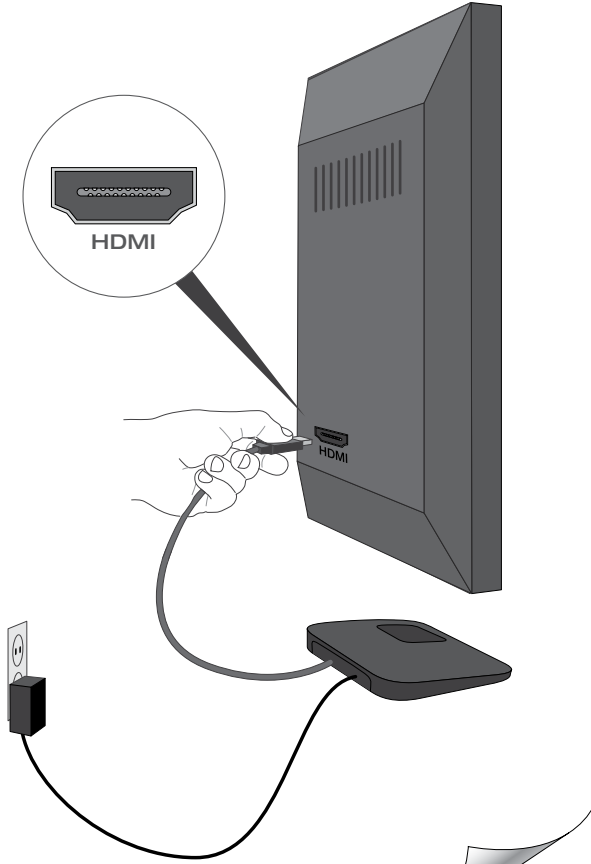
3 Use the source's remote at close range to find where IR signals are received.



Then aim the end of the IR emitter at that spot.

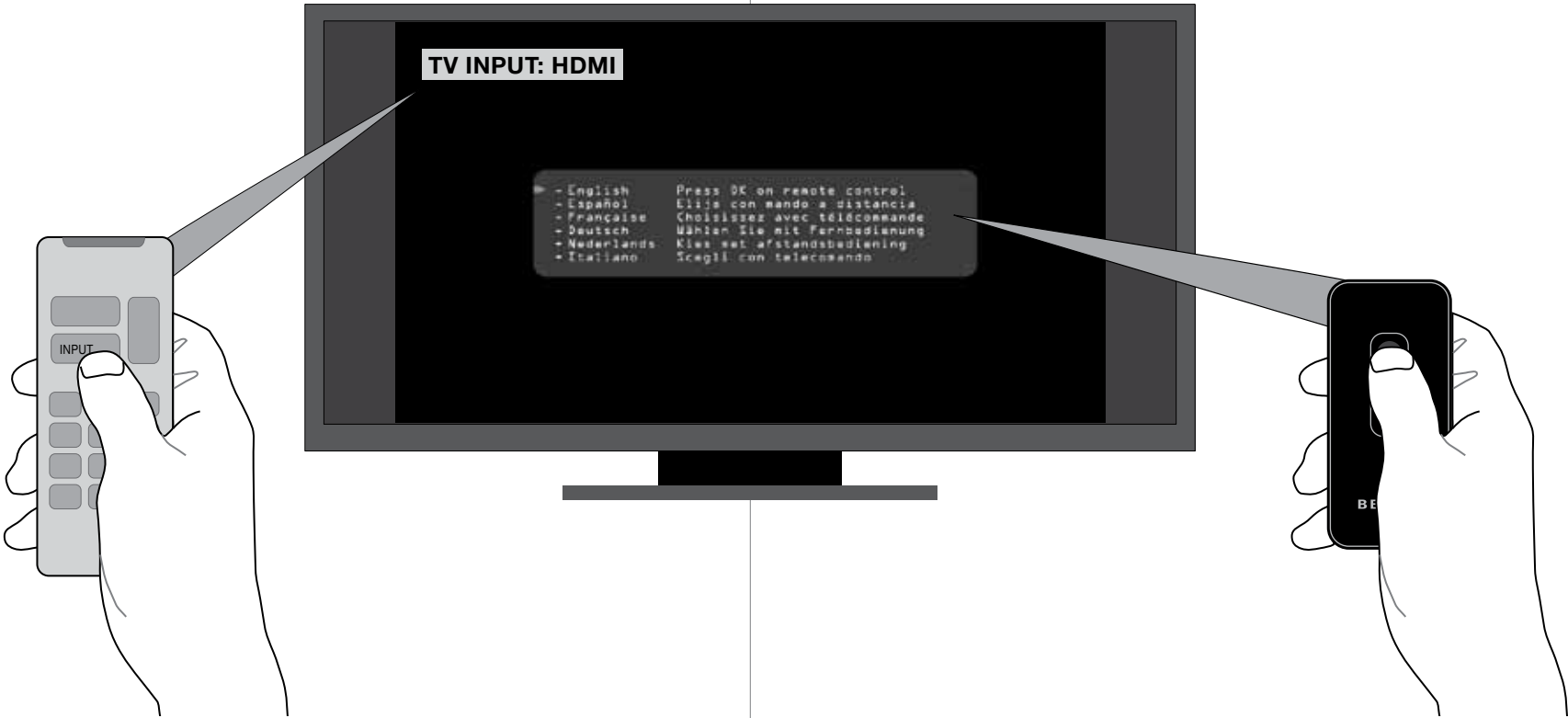


4 Connect receiver to TV and to power. Make sure receiver's top surface is visible in order to receive signals from your remotes.



5 Use your TV remote to set the input to the HDMI port that the ScreenCast receiver is connected to.

6 Remove the battery tab from the ScreenCast remote and use it to complete the on-screen setup.



Optional wall-mounting of receiver: Use the included wall-mounting template and hardware to mount the receiver to the wall. Make sure that at least the front half of the top surface is visible, so that it can receive signals from your remotes.

